

Belfast Port Health Our role & BREXIT

City and Neighbourhood Services
Department



Belfast
City Council

www.belfastcity.gov.uk



Belfast Docks



Belfast
City Council

www.belfastcity.gov.uk

Belfast Port Health

- 70% of NI's seaborne trade
- 20% the island of Ireland's trade
- 125,000 containers
- 3% increase in cargo handled by the port 2017
- Substantial investment into the container handling facility 2018/19.
- 5,874 ships into the ports 2017
- 155,000 cruise passengers 2017



Belfast
City Council

www.belfastcity.gov.uk

Belfast Port Health

- 1988 BCC approved the provision of this facility.

Today

- 3 BCC staff work in the unit.

Duties:-

- Imported food control.
- Infectious disease control - Shipping



Belfast
City Council

www.belfastcity.gov.uk

Belfast Port Health Imported Food

- The inspection facilities are approved by the EU as a DPE, DPI and BIP.
- Work in partnership with DAERA'S Portal branch on POAO.



Belfast
City Council

www.belfastcity.gov.uk

Belfast Port Health First 6 months of 2018 Imports

- 15 countries, imports from every continent
- Strawberries from Morocco, Vodka from USA, Onions from Chile, Flaxseed from Kazakhstan, Dates from Iran, Spices from India, Plastic kitchenware from China.



Belfast
City Council

www.belfastcity.gov.uk

Belfast Port Health

Imported Food

- More than £1,200,000 worth of High risk food entered NI via the DPE.
- &
- More than 1,700,000 kg of POAO entered NI via the BIP.



Belfast
City Council

www.belfastcity.gov.uk

Belfast Port Health



Belfast
City Council

www.belfastcity.gov.uk

Belfast Port Health



Belfast
City Council

www.belfastcity.gov.uk

Belfast Port Health



Belfast
City Council

www.belfastcity.gov.uk

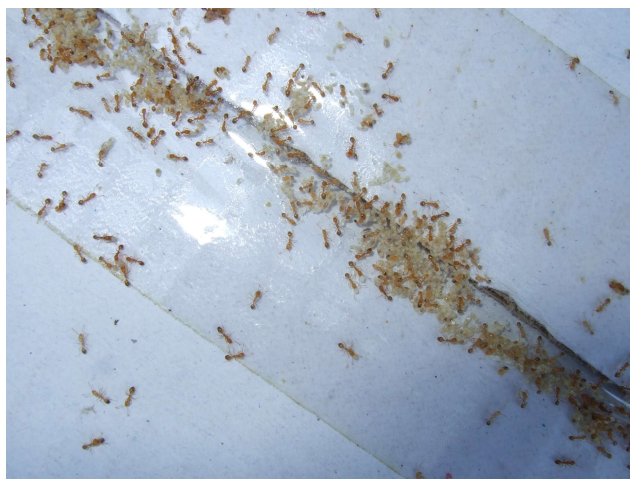
Belfast Port Health



Belfast
City Council

www.belfastcity.gov.uk

Belfast Port Health



Belfast
City Council

www.belfastcity.gov.uk

Belfast Port Health



Belfast
City Council

www.belfastcity.gov.uk

Belfast Port Health EU IT systems

TRACES

TRAdE Control & Expert System

TRACES is the European Commission's multilingual online management tool for all sanitary requirements on intra-EU trade and importation of animals, semen and embryo, food, feed and plants.

RASFF

Rapid Alert System for Food and Feed

A key tool to ensure the flow of information to enabling swift reaction when risks to public health are detected in the food chain

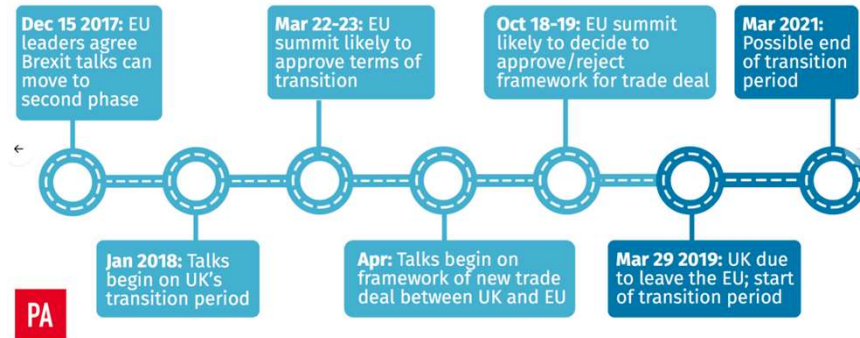


Belfast
City Council

www.belfastcity.gov.uk

Belfast Port Health

Countdown to Brexit: key events

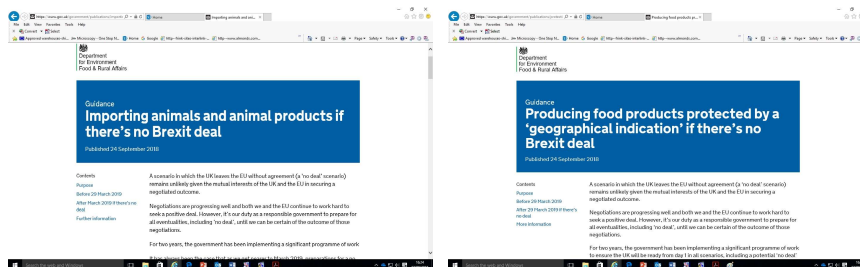


Belfast
City Council

www.belfastcity.gov.uk

Belfast Port Health

Published 24th Sept., gov.uk



Belfast
City Council

www.belfastcity.gov.uk